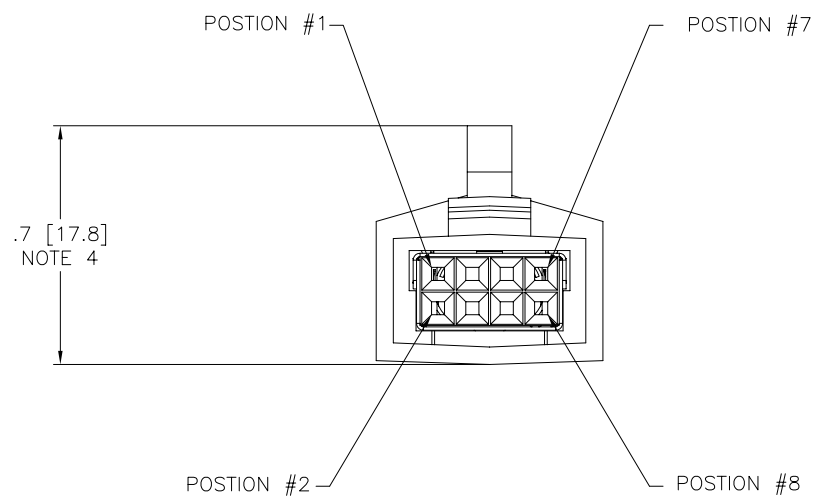
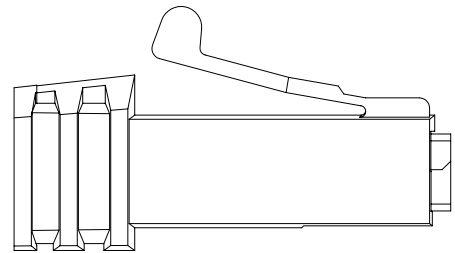
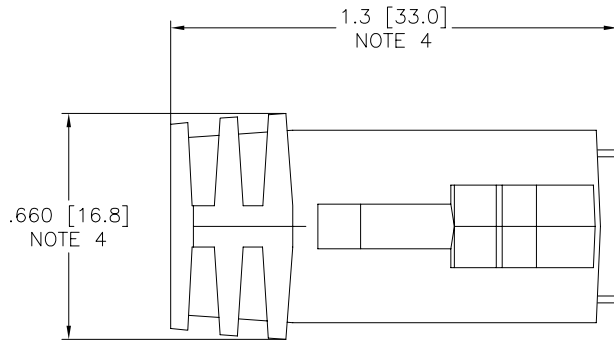


PRODUCT NO.
SEE SHT. 2



FCIconnect.com

Copyright FCI

| | | | | | | | | | | | | | |
|-------------|----------|-----|----------|---------------------------------------|-------------|----------------------------------|-----------|-----------------|-------------------------------|---|--|--|--|
| mat'l. code | | | | surface ISO 1302 ✓ | | tolerance ISO 406 ISO 1101 | | projection ⊕ | | product family LATCH-N-LOK | | | |
| tr | | | | tolerances unless otherwise specified | | | | INCH/MM | | title 2X4 LNL 360° SHIELDED PLUG CONN. KIT W/O PV'S | | | |
| A | v90622 | CGC | 3/4/99 | angles | linear | .XX±.01/.3 | | | sheet 1 of 3 size | | | | |
| B | v91818 | RGD | 8/12/99 | 0°±2' | | .xxx±.005/.13 | scale 2:1 | | dwg no 98028 | | | | |
| C | v92065 | RGD | 11/2/99 | | | .xxxx±.0020/.051 | | | A3 | | | | |
| D | v01093 | TFG | 7/6/00 | dr | M.HERNANDEZ | 12/03/04 | | | type Product Customer Drawing | | | | |
| E | M04-0229 | MHT | 12/03/04 | enr | M. BARRIOS | 12/03/04 | | | | | | | |
| F | M06-0365 | AGS | 9/21/06 | chr | M. BARRIOS | 12/03/04 | | | | | | | |
| sheet index | | | | revision sheet | | F | F | F | | | | | |
| | | | | | | 1 | 2 | 3 | | | | | |

form: A3

1 | 2 | 3 | 4 | 5 | 6

98028-WXYZLF

Z key position

| | |
|---|------------|
| 1 | POSITION 1 |
| 2 | POSITION 2 |
| 3 | NO KEY |

XY color

| | | | |
|---------------|------------------------|----------------|----------------|
| 01 | LT. GRAY | --- | OBS |
| 02 | OFF WHITE | | |
| 03 | DK. GRAY | --- | OBS |
| 04 | BLACK | | |
| 05 | SLATE GRAY | --- | OBS |
| 06 | D. GRAY | --- | OBS |
| 07 | SILVER GRAY | | |
| 08 | PEARL WHITE | --- | OBS |
| 09 | PEBBLE GRAY | | |

W cable o.d.

| | |
|---|-----------|
| 7 | .250/6.35 |
| 8 | .280/7.11 |

EXAMPLE

98028-7013LF: IS A 2X4 REAR EXIT PLUG IN LIGHT GRAY WITH A CABLE EXIT HOLE SIZE OF .250[6.35] CABLE RANGE, WITH NO KEYING OPTION.



Copyright FCI

| | | | | | | | | | |
|-------------|-----|---|------|----------------------------------|--|---------------------------------------|--|--|--|
| mat'l. code | | surface ISO 1302 <input checked="" type="checkbox"/> | | tolerance ISO 406 ISO 1101 | | projection | | product family LATCH-N-LOK | |
| ltr | ecn | no | dr | date | | tolerances unless otherwise specified | | title | |
| F | | | | | | .XX±.01/.3 | | 2X4 LNL 360° SHIELDED PLUG CONN. KIT W/O PV'S | |
| | | | | angles | | linear .xxx±.005/.13 | | INCH/MM | |
| | | | | 0'±2' | | .xxx±.0020/.051 | | scale 2:1 | |
| | | | dr | M.HERNANDEZ 12/03/04 | | | | dwg no | |
| | | | enr | M. BARRIOS 12/03/04 | | | | sheet 2 of 3 size | |
| | | | chr | M. BARRIOS 12/03/04 | | | | 98028 A3 | |
| | | | appd | M. BARRIOS 12/03/04 | | | | type Product Customer Drawing | |
| sheet index | | revision sheet | | | | | | | |

form: A3 | 1 | 2 | 3 | 4 | 5 | 6

1

2 3

4

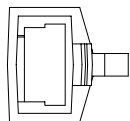
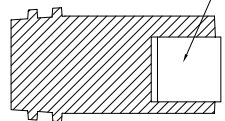
5

6

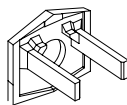
VIEWS OF BOTTOM OF PLUG

KEY POSITION 1

SHIELD CAN



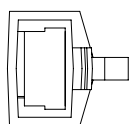
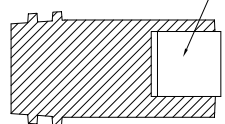
REAR CAP



MATES WITH P/N 74355-YYY1
MATES WITH P/N 87316-YYY1

KEY POSITION 2

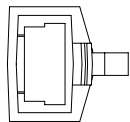
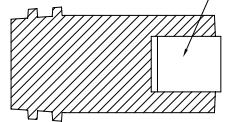
SHIELD CAN



MATES WITH P/N 74355-YYY2
MATES WITH P/N 87316-YYY2

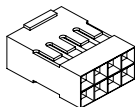
NO KEY

SHIELD CAN

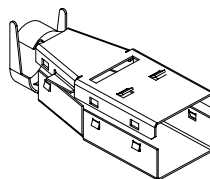


MATES WITH P/N 74355-YYY
MATES WITH P/N 87316-YYY

MINI LATCH HOUSING

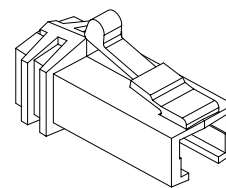


TOP SHIELD



BOTTOM SHIELD

PLUG FRONT



NOTES:

- EACH KIT CONTAINS ONE OF EACH OF THE FOLLOWING COMPONENTS
LATCH -N- LOK PLUG
LATCH -N- LOK END CAP
MINI LATCH HOUSING
360° SHIELD CANS.
- COMPONENTS ARE BULK PACKAGED WITH 100 pcs. OF A COMPONENT PER BAG. PV'S MUST BE ORDERED SEPERATELY.
- MATERIALS USED: PLUGS AND CAPS ARE MOLDED IN POLYCARBONATE. THE MINI LATCH HOUSINGS ARE MOLDED IN NYLON. COLOR IS BLACK. THE SHIELD CAN IS 3/4 HARD BRASS PLATED WITH 2.5um MIN. BRIGHT TIN. 1.0um MIN. NICKEL UNDERPLATE.
- DIMENSIONS ARE APPROXIMATE AND REFLECT PLUG IN UNLATCHED STATE.
- PART NUMBERS WITH LF IN THE END ARE LEAD FREE.
- THIS PRODUCT MEETS EUROPEAN UNION DIRECTIVES AND OTHER COUNTRY REGULATION AS DESCRIBED IN GS-22-008.

| | | | | | | | | | |
|-------------|-----|-----------------------|----|----------------------------------|--|---------------------------------------|--|--|--|
| mat'l. code | | surface ISO 1302 ✓ | | tolerance ISO 406 ISO 1101 | | projection ⊕ | | product family LATCH-N-LOK | |
| ltr | ecn | no | dr | date | | tolerances unless otherwise specified | | title | |
| F | | | | | | angles | linear | 2X4 LNL 360° SHIELDED PLUG CONN. KIT W/O PV'S | |
| | | | | | | 0°±2' | .XX±.01/.3 .xxx±.005/.13 .xxx±.0020/.051 | sheet 3 of 3 size A3 | |
| | | | | | | dr | M.HERNANDEZ | 12/03/04 | |
| | | | | | | enr | M. BARRIOS | 12/03/04 | |
| | | | | | | chr | M. BARRIOS | 12/03/04 | |
| | | | | | | app | M. BARRIOS | 12/03/04 | |
| sheet index | | revision sheet | | | | | | type Product Customer Drawing | |



FCJconnect.com

Copyright FCJ